



## MIMOS Control Management System (Mi-Manage)

Control, management and interaction of devices and actuators is becoming more and more dominant in the dawn of the era of Internet of Things. MIMOS Mi-Manage is a control management system platform that provides web services for developers to create custom applications for sensors, relays and actuators management.

### Overview

MIMOS Mi-Manage platform provides web services that allow developers to customise applications to suit individual needs. It also supports workflow-based control and provides a method to create applications to manage different types of sensors using SOAP interface. The platform receives data from device networks, pushes data and commands to device networks and provides data to business intelligence module and retrieves results for publishing. It is also able to carry out rule-based data processing and problem escalations.

### Features

Mi-Manage comprises the following features:

- **Commercial Systems Compatibility**  
Mi-Manage consists of multiple interfaces to communicate with other commercial systems that support the CAN or ZigBee protocol.
- **Local and Remote Presence**  
Mi-Manage supports two modes of operation namely local (local environment handling) and remote (multiple environment handling).
- **Interaction Capabilities**  
Mi-Manage offers interaction capabilities via Activiti workflow engine, allowing developers customised control and the capability to monitor workflows to cater to unique applications.
- **Control and Monitoring Capabilities**  
Mi-Manage's control and monitoring capabilities allows for the management of sensors, relays and actuators that are used in applications such as the management system of a greenhouse.

### Technology Benefits

The main impacts of Mi-Manage are:

- **Configurable Control Workflow**  
Using Mi-Manage, users can create customised workflow to control sensors and actuators in unique environments and application thereby reducing the need to redesign the process and related software.
- **Supports Physical and Remote Sensing**  
Mi-Manage concurrently supports serially connected sensors using CAN protocol as well as wireless (ZigBee and GPRS) for communication between sensors, commercial hardware and MIMOS hardware.
- **Customisable for Unique Environments**  
Using the API, users can create personalised applications to function in unique environments or custom tailor the features to suit requirements.

### Technology Summary

#### Mi-Manage

A control management system platform that provides web services that enables creation of applications for devices such as actuators and sensors.

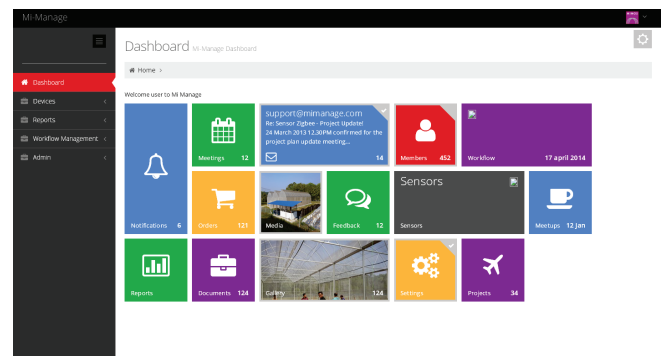
**Industries:** Enterprise, Government, Agriculture, Healthcare

#### Features

- Commercial systems compatibility
- Local and remote presence
- Interaction capabilities
- Control and monitoring capabilities

#### Technology Benefits

- Configurable control workflow
- Supports physical and remote sensing
- Customisable for unique environments



MIMOS Mi-Manage dashboard

### System Requirements

Mi-Manage	
<b>Hardware Requirements</b>	
Processor	Dual-Core Processor
Memory	Minimum 4GB of RAM
Disk Storage	Minimum 100GB of hard disk space (system operation) Minimum 5GB of hard disk space (installation)
<b>Software Requirements</b>	
Operating System	Linux® CentOS 5.4, Windows® 2008, Windows® 7
Web Server	Apache™ HTTPD 2.4.7
Application Server	Tomcat™ 7, JDK™ 7
Database Management	MySQL® 5.5, SQLyog 11.28
Component	Activiti Explorer 5.14, Activiti Rest 5.14, Win Comm., SOAP UI
Web Browser	Internet Explorer® 9.0 or above Mozilla® Firefox 11 or above JavaScript enabled

MIMOS is the leader in ICT innovations, pioneering new market creations for partners through patentable technologies for economic growth. For more information on MIMOS technologies, contact [fnsb@mimos.my](mailto:fnsb@mimos.my) or [market@mimos.my](mailto:market@mimos.my) or go to [www.mimos.my](http://www.mimos.my).



Innovation for Life™