



BIG DATA IOT TECHNOLOGY ACCELERATOR

Accelerating Ideas Into Results

Join us at BITX Lab

WHO?

For organisations



Accelerate ideas into business



Expand business horizons



Enable system development & integration



Gain know-how to propel business growth

WHY?

Benefits



SME's/Start-ups
Full system integration



Enterprises
Complete system solution



Telcos/Service Industry
New application or service development testbed



Product Houses
Compatibility & interoperability testing

HOW?

Engagement process



WHERE?

BITX Lab Membership Sign Up
www.mimos.my/bitx

MIMOS Berhad, Technology Park Malaysia, 57000 Kuala Lumpur
Tel: +603 8995 5000 Fax: +603 8996 2755 E-mail: myiot@mimos.my

www.mimos.my/bitx [mimosmalaysia](#) [mimosmalaysia](#) MIMOS Berhad
 [mimosmalaysia](#) [mimosmalaysia](#)



BIG DATA IOT TECHNOLOGY ACCELERATOR



National R&D Centre in ICT

MIMOS



About BITX Lab

- Launched by the Ministry of Science, Technology and Innovation (MOSTI) in 2015
- Serves as the technology reference centre for open innovation activities
- Facilitates national IoT ecosystem development

Vision

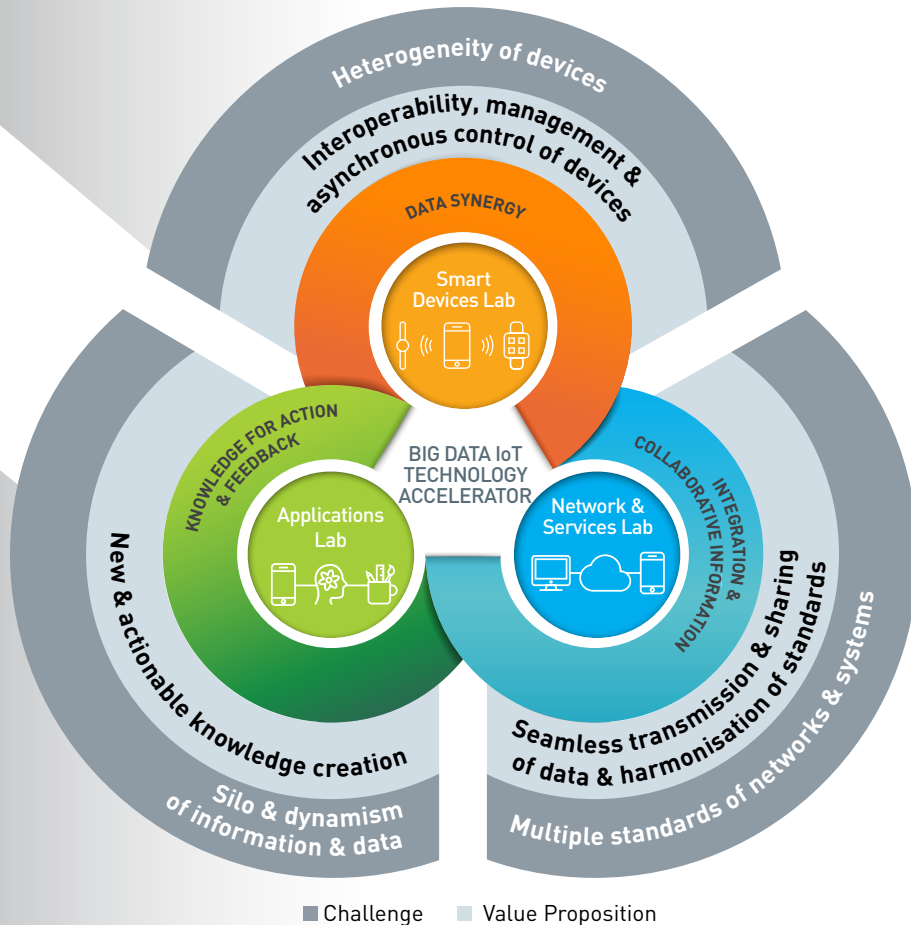
- Position Malaysia as the Premier Regional IoT Development Hub

Mission

- Creating IoT Industry Ecosystem
- Strengthening Technopreneur Capabilities
- Catalysing IoT Development Hub

SMART DEVICES LAB:

Integration of connected devices, sensors and promote information synergy



APPLICATIONS LAB:

Development and showcase of applications and solutions

NETWORK & SERVICES LAB:

Interoperability of devices, networks and systems with big data analytics

MIMOS Internet Services of Things (MI-MIST)

An integrated services platform to simplify the development of applications and the enablement of IoT solutions and services.

Technology Benefits

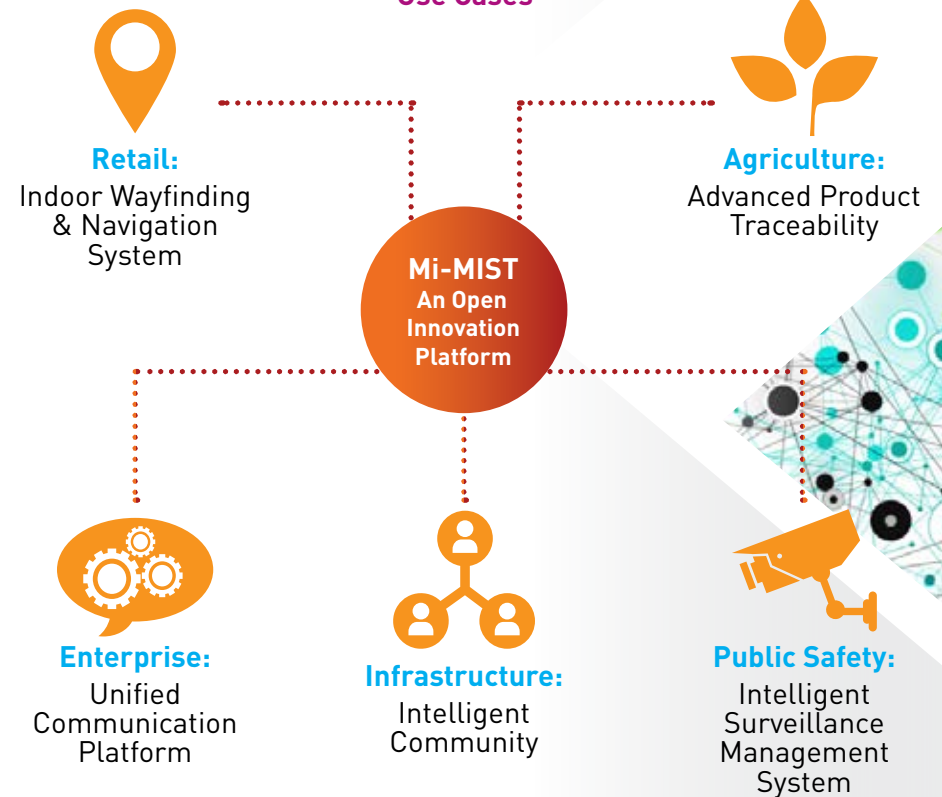
Unlocking IoT Innovations:

- Harmonise multiple standards
- Strengthen local technopreneurs' capability
- Enable new technology creation
- Drive heterogeneous system architecture

Bridging Data & Services:

- Enable integration between devices and sensors
- Assist application development
- Facilitate scalable and cost-efficient infrastructure
- Provide reliable and available services

Use Cases*



* Some examples of MiMIST that's being used to date