

# Mi-SURIA

## Platform Independent Solar PVMS

Mi-SURIA (Smart Universal Renewable Energy Intelligent Application) provides real-time monitoring, performance optimisation, fault diagnosis, alarm, notifications, asset management, historical data storage, weather monitoring, plant management, security & asset control. The data captured never



### Overview

Mi-SURIA (Smart Universal Renewable Energy Intelligent Application) provides real-time monitoring, performance optimisation, fault diagnosis, alarm, notifications, asset management, historical data storage, weather monitoring, plant management, security & asset control. The data captured never leaves Malaysia, maintaining data sovereignty. Mi-Suria is a single interface to monitor and consolidate consistent information that provides predictive maintenance, machine learning-based anomalous detection, advanced performance analytics, and multisite management.

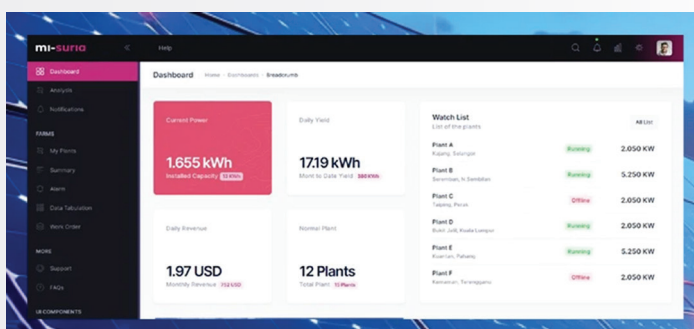
### Key Features

- **Performance Dashboard**  
Real-time monitoring with tools for optimising performance, diagnosing faults and managing assets, all in one view.
- **Asset Control & Security**  
Stores data securely within Malaysia, monitors weather and plant conditions and manages assets, ensuring full control and privacy.
- **Power Utilisation Monitoring**  
Tracks real-time power usage and generates reports on daily, monthly and yearly yields, as well as alarms and work orders for each plant.

- Works with multiple brands of string or microinverters, providing a single platform for monitoring. It provides a single interface to monitor and consolidate consistent information across multiple brands of photovoltaic inverters installed.
- Data sovereignty is maintained by storing data locally within MIMOS.

### Applications

- Solar Farm Monitoring
- Industrial Rooftop Solar Systems
- Hybrid Power Systems
- Large Scale Power Plants



### Technology Benefits

- Universal Photovoltaic Monitoring System (PVMS) developed by MIMOS.
- Focus on real-time monitoring and predictive maintenance.

